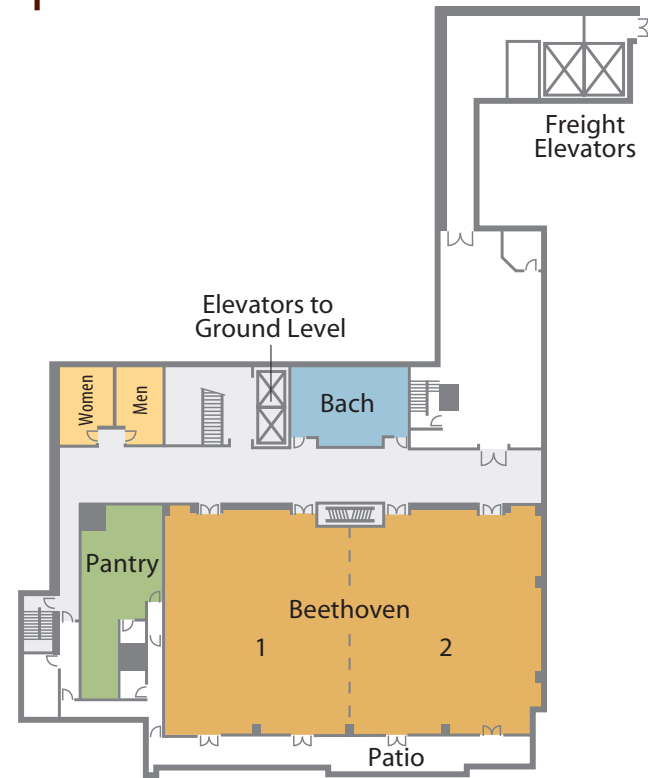


upper level



ground level



legend

- Ballroom
- Restrooms
- Meeting Rooms
- Business Services
- Boardrooms
- Pantries
- X
 Elevators

encore meeting rooms & ballroom

	WIDTH & LENGTH	SQUARE FEET	THEATER	CLASSROOM	ROUNDS OF 10	RECEPTION	HOLLOW SQUARE	U-SHAPE	CONFERENCE	CEILING HEIGHT
Bach	37 X 16	592	N/A	N/A	N/A	N/A	N/A	N/A	18	13'
Beethoven	118 X 69	8,142	728	440	440	1,163	144	122	108	16'
Beethoven 1	59 X 69	4,071	364	240	250	580	94	71	48	16'
Beethoven 2	58 X 69	4,002	364	240	250	580	94	71	48	16'
Beethoven Patio	118 X 10	1,180	N/A	N/A	N/A	168	N/A	N/A	N/A	16'
Brahms	118 X 48	5,664	540	336	320	809	128	108	106	16'
Brahms 1	29 X 48	1,392	110	81	80	198	52	40	42	16'
Brahms 1 & 2	58 X 48	2,784	294	172	150	397	78	55	52	16'
Brahms 1-3	87 X 48	4,176	420	280	210	596	100	80	76	16'
Brahms 2	29 X 48	1,392	144	90	80	198	52	40	42	16'
Brahms 2 & 3	58 X 48	2,784	308	216	200	397	78	62	50	16'
Brahms 2-4	87 X 48	4,176	420	280	210	596	100	80	76	16'
Brahms 3	29 X 48	1,392	144	90	80	198	52	40	42	16'
Brahms 3 & 4	58 X 48	2,784	294	172	150	397	78	55	52	16'
Brahms 4	29 X 48	1,392	110	81	80	198	52	40	42	16'
Brahms Patio	129 X 35	4,515	N/A	N/A	360	645	N/A	N/A	N/A	16'
Chopin	118 X 44	5,192	414	336	270	741	126	111	106	16'
Chopin 1	29 X 44	1,276	105	72	60	182	40	32	36	16'
Chopin 1 & 2	58 X 44	2,552	270	176	150	364	70	52	48	16'
Chopin 1-3	87 X 44	3,828	378	231	210	546	100	85	76	16'
Chopin 2	29 X 44	1,276	120	88	80	182	50	39	36	16'
Chopin 2 & 3	58 X 44	2,552	280	192	150	364	72	56	52	16'
Chopin 2-4	87 X 44	3,828	378	231	210	546	100	85	76	16'
Chopin 3	29 X 44	1,276	120	88	80	182	50	39	36	16'
Chopin 3 & 4	58 X 44	2,552	270	176	150	364	70	52	48	16'
Chopin 4	29 X 44	1,276	105	72	60	182	40	32	36	16'
Chopin Patio	118 X 24	2,832	N/A	N/A	190	404	N/A	N/A	N/A	16'
Debussy	43 X 56	2,408	234	154	120	344	68	54	44	16'
Debussy 1	43 X 28	1,204	120	66	60	172	44	36	34	16'
Debussy 2	43 X 28	1,204	120	66	60	172	44	36	34	16'
Encore Ballroom	175 X 118	20,650	1,845	1,260	1,040	1,630	236	N/A	152	25'
Encore Ballroom 1	29 X 56	1,624	115	90	80	140	46	42	44	25'
Encore Ballroom 1-3	56 X 118	6,608	598	383	360	480	136	N/A	106	25'
Encore Ballroom 2	60 X 56	3,360	336	216	200	220	80	60	50	25'
Encore Ballroom 2,3,5,6,8	175 X 90	15,750	1,296	960	780	1,050	N/A	N/A	N/A	25'
Encore Ballroom 3	29 X 56	1,624	115	90	80	140	46	42	44	25'
Encore Ballroom 4	19 X 50	950	91	60	50	70	48	44	44	25'
Encore Ballroom 4 & 7	107 X 19	2,033	192	112	100	156	N/A	N/A	N/A	25'
Encore Ballroom 4-8	107 X 118	12,626	1,080	728	560	970	174	N/A	108	25'
Encore Ballroom 5	60 X 98	5,880	598	324	340	450	118	N/A	86	25'
Encore Ballroom 5,6,8	89 X 98	8,722	756	544	480	670	N/A	N/A	N/A	25'
Encore Ballroom 6	19 X 50	950	100	70	70	70	40	36	44	25'
Encore Ballroom 6 & 8	19 X 107	2,033	198	120	100	156	N/A	N/A	N/A	25'
Encore Ballroom 7	19 X 57	1,083	98	60	80	82	48	44	52	25'
Encore Ballroom 8	19 X 57	1,083	112	70	90	82	48	44	50	25'
Encore Ballroom 1 & 2	56 X 89	4,984	420	304	280	380	108	N/A	76	25'
Encore Ballroom 2 & 3	56 X 89	4,984	504	297	280	380	108	N/A	76	25'
Encore Ballroom 2 & 5	60 X 154	9,240	864	536	520	710	N/A	N/A	N/A	25'
Encore Ballroom 1, 2, 4, 5, 7	177 X 88	15,576	1,280	930	750	1,025	216	168	148	25'
Handel	28 X 33	924	90	54	50	132	36	28	28	13'
Mozart	24 X 33	792	90	56	50	113	34	28	28	13'
Puccini	26 X 26	676	N/A	N/A	N/A	N/A	N/A	N/A	15	13'
Ravel	34 X 24	816	N/A	N/A	N/A	N/A	N/A	N/A	20	13'
Schubert	27 X 28	756	78	52	60	108	30	24	22	13'
Strauss	27 X 30	810	78	63	70	115	30	26	22	13'
Vivaldi	27 X 33	891	90	63	70	127	36	30	28	13'

Capacity figures do not account for head tables, dance floors or audio-visual requirements and the final set-up number is subject to Fire Marshal approval. All functions greater than 300 persons will be subject to Fire Marshal approval. The Encore Ballroom stage is 45" high and is measured from the floor to the top of the stage. The stage depth is 23' x 56' wide and has a ceiling height of 25'.